

Block Type 1 - 12 x 1 Bed Apartments

Block Type 2 - 6 x 2 Bed Apartments

Block Type 3 - 6 x 2 Bed Apartments & 3 x Studio Apartments

Block Type 4 - 6 x 3 Bed Apartments

## BDG BLOCK TYPE 1

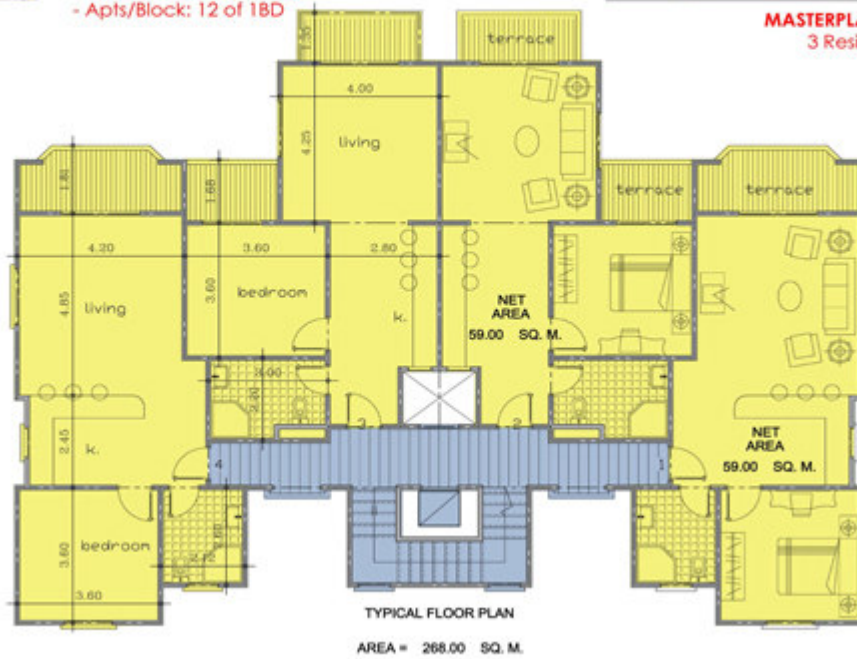


- ORIGINAL BLOCK
- GROUND + 2 FLOORS
- 4 apts of 1BD per floor
- 1BD aprox. area: 59m<sup>2</sup>
- Apts/Block: 12 of 1BD



**MASTERPLAN LOCATION**  
3 Residential Blocks

PEARL OF SAHL HASHEESH - PLOT 22B  
Building Type 1 Floor Plan  
Oct, 2007



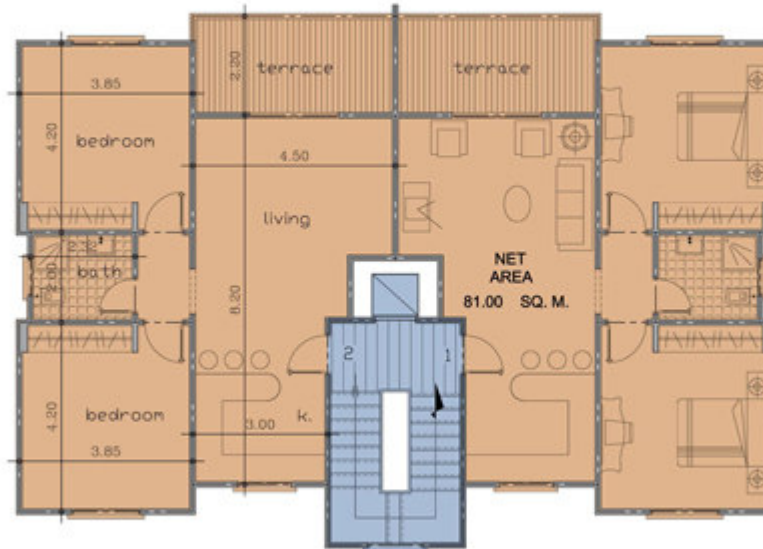
## BDG BLOCK TYPE 2



- ORIGINAL BLOCK
- GROUND + 2 FLOORS
- 2 apts of 2BD per floor
- 2BD aprox. area: 81m<sup>2</sup>
- Apts/Block: 6 of 2BD



MASTERPLAN LOCATION  
11 Residential Blocks



TYPICAL FLOOR PLAN

BLOCK AREA = 180 SQ. M.

PEARL OF SAHL HASHEESH - PLOT 22B  
Building Type 2 Floor Plan  
Oct,2007

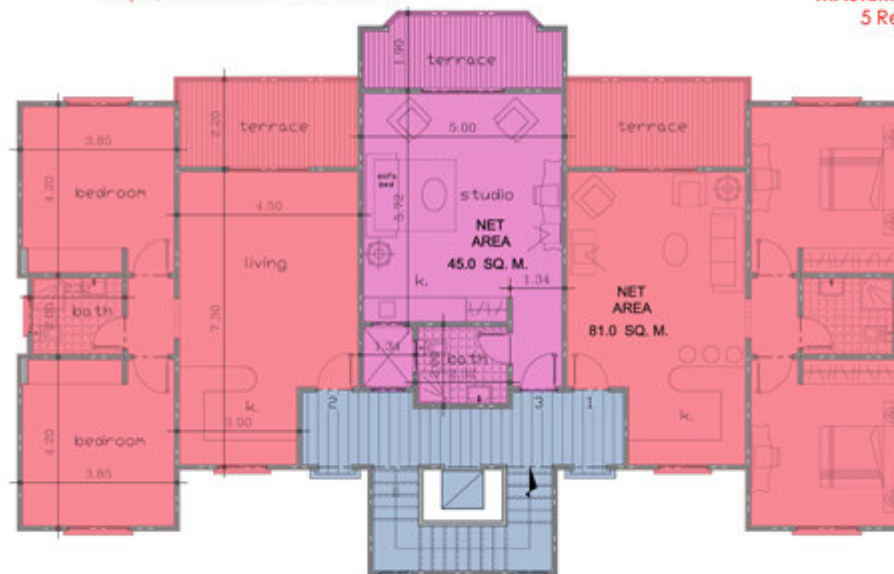
## BDG BLOCK TYPE 3



- NEW BLOCK
- GROUND + 2 FLOORS
- 2 apts of 2BD per floor
- 1 apt Studio per floor
- 2BD aprox. area: 81m<sup>2</sup>
- Studio aprox. area: 45m<sup>2</sup>
- Apts/Block: 6 of 2BD + 3 Studios



MASTERPLAN LOCATION  
5 Residential Blocks



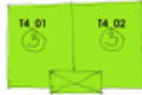
TYPICAL FLOOR PLAN

BLOCK AREA = 236.00 SQ. M.

PEARL OF SAHL HASHEESH - PLOT 22B  
Building Type 3 Floor Plan  
Oct,2007



## BDG BLOCK TYPE 4



- NEW BLOCK
- GROUND + 2 FLOORS
- 2 apts of 3BD per floor
- 3BD aprox. area: 110m<sup>2</sup>
- Apts/Block: 6 of 3BD



**MASTERPLAN LOCATION**  
3 Residential Blocks

PEARL OF SAHL HASHEESH - PLOT 22B  
Building Type 4 Floor Plan  
Oct.2007



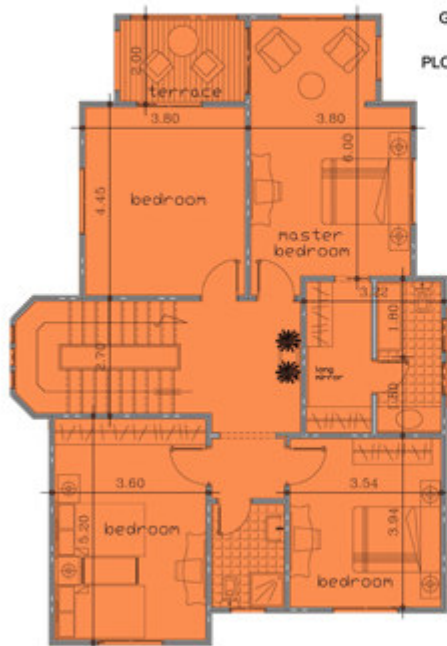
**TYPICAL FLOOR PLAN**  
BLOCK AREA = 238 SQ. M.



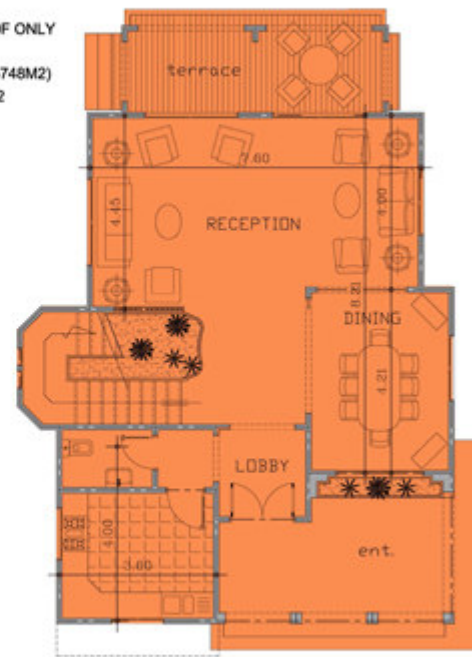
**MASTERPLAN LOCATION**  
12 Villa Plots

PEARL OF SAHL HASHEESH - PLOT 22B  
Typical Villa Floor Plans  
Oct.2007

GROUND, FIRST & ROOF ONLY  
NO BASEMENT  
PLOT AREA = VARIES(500-748M<sup>2</sup>)  
POOL AREA = 40M<sup>2</sup>



**FIRST FLOOR PLAN** AREA = 122 SQ. M.



**GROUND FLOOR PLAN** AREA = 98 SQ. M.

## VILLA

