

The Pearl Sahl Hasheesh

Why is this Property Unique?



- 1,2 & 3 bedroom apartments from £50k, €62k, \$100k
- 4 bedroom villas from £297k, €374k, \$594k
- Enveloped by golf course

Description

The Pearl Sahl Hasheesh Egypt

Set in the heart of Sahl Hasheesh, The Pearl is a premium development of just 177 properties, designed by Dr Hussien Abu Sieda, the architect responsible for the Sahl Hasheesh master plan. His vision of an intimate and luxurious retreat has resulted in perhaps the most beautiful and exclusive resort on the Red Sea coast.

Enveloped by a golf course, its elevated position enjoys stunning 360° views across the bay, the impressive entrance and the dramatic mountain backdrop. As well as first-class, on-site facilities that include the world's first Mark Foster Health Club & Spa, The Pearl of Sahl Hasheesh property owners will be able to enjoy the outstanding facilities on offer in Sahl Hasheesh, just a short step away.

The Pearl offers 165 apartments of varying sizes, Studios, 1, 2 & 3 bedroom Apartments, all located on four small islands. Each Pearl island will be made up of a formation of four different block types, three storeys high, set within beautifully landscaped gardens.

Currently The Pearl is the only development offering four bedroom Villas in Sahl Hasheesh. These luxurious and unique 12 units offer 222 sq metres of living space and a swimming pool on a private plot of minimum 500 sq metres with views over the Golf Course and beyond to the Red Sea.

The Pearl of Sahl Hasheesh will have the honour of displaying an original cast bronze of The Horses of Helios, an impressive and infamous equestrian statue located in London's Piccadilly Circus. Using the original moulds, sculptor Rudy Weller has made a second bronze casting. The sculpture, a symbol of life, power, strength and energy, will be situated at the entrance to The Pearl.

The Pearl of Sahl Hasheesh offers 165 apartments of varying sizes, Studios, 1, 2 and 3 bedroom Apartments located on four small islands. Each Pearl island will be made up of a formation of four different types of blocks, each block is three storeys high and set within beautifully landscaped gardens.

Currently The Pearl is the only development offering four bedroom Villas in Sahl Hasheesh. These luxurious and unique 12 units offer 222 sq metres of living space and a swimming pool on a private plot of minimum 500 sq metres with views over the Golf Course and beyond to the Red Sea.

Features:

- Elevated position
- Extremely low density, intimate build
- No building in front or behind
- Mark Foster Health club and Spa
- Six pools including a 25m lap pool
- Gymnasium
- Spa & Sauna



- Solarium
- Lush landscaped gardens
- Direct access to beach
- Overlooks Serennia
- Reception with 24-hour Security and Concierge service
- Internet Cafe & Business centre
- Games Room
- Restaurant and Bar
- Laundry service
- Shops
- Extremely competitive launch prices
- High end finishes and specifications
- Air-conditioning additional - approx £500
- Rental pool
- Low maintenance costs

Location

The Pearl, Sahl Hasheesh is just 20km from Hurghada International Airport, with Luxor approximately a three and half hour drive away. There are excellent weekly flight connections from the UK to Hurghada.

The Pearl of Sahl Hasheesh is less than 5 hours from the UK in one of most beautiful bays in the Red Sea; the master planned resort of Sahl Hasheesh has been inspired by rich Egyptian architecture and heritage. For precise locations using Google maps use the links below, notes clicking these links will open a new window in your browser:

- [Sahl Hasheesh](#)
- [Egypt](#)

Pricing - Payment Profile - Completion Date

Property Type	PRE-LAUNCH PRICES			
	GBP	EUR	USD	AUD
Studio Apartments From	49,800	62,748	99,600	107,568
1 Bedroom Apartments From	64,200	80,892	128,400	138,672
2 Bedroom Apartments From	89,700	113,022	179,400	193,752
3 Bedroom Apartments From	121,800	153,468	243,600	263,088
4 Bedroom Villas From	297,000	374,220	594,000	641,520

Exchanges rates are approximate

*Air-conditioning additional - Approximately £500

Installment	Percentage	Expected Date
Reservation Fee	£5,000 / €7,000	Fully refundable within 21 days
1st Installment	40%	(Less Reservation Fee) On Contract
Balance	60%	Mortgage - Subject to status On completion (3rd Quarter 2009)

THE PEARL COMPLETION DATE: Q3 2009

[For up to date The Pearl Property Availability enquiry now](#)



We are not charging a finders fee on this property - you pay the developers price - you will not find it cheaper anywhere!

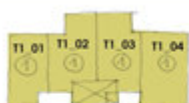
Block Type 1 - 12 x 1 Bed Apartments

Block Type 2 - 6 x 2 Bed Apartments

Block Type 3 - 6 x 2 Bed Apartments & 3 x Studio Apartments

Block Type 4 - 6 x 3 Bed Apartments

BDG BLOCK TYPE 1

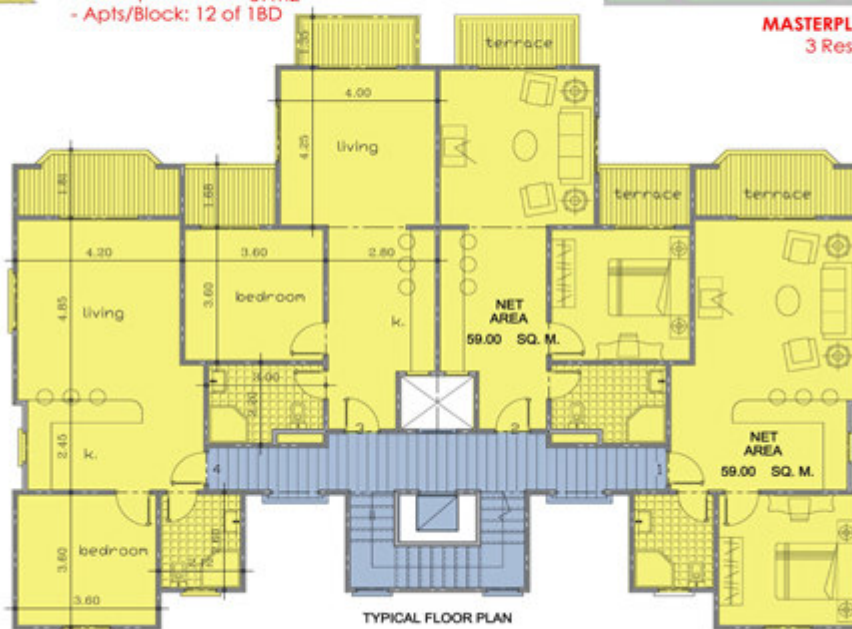


- ORIGINAL BLOCK
- GROUND + 2 FLOORS
- 4 apts of 1BD per floor
- 1BD aprox. area: 59m2
- Apts/Block: 12 of 1BD



MASTERPLAN LOCATION
3 Residential Blocks

PEARL OF SAHL HASHEESH - PLOT 22B
Building Type 1 Floor Plan
Oct.2007



TYPICAL FLOOR PLAN
AREA = 268.00 SQ. M.

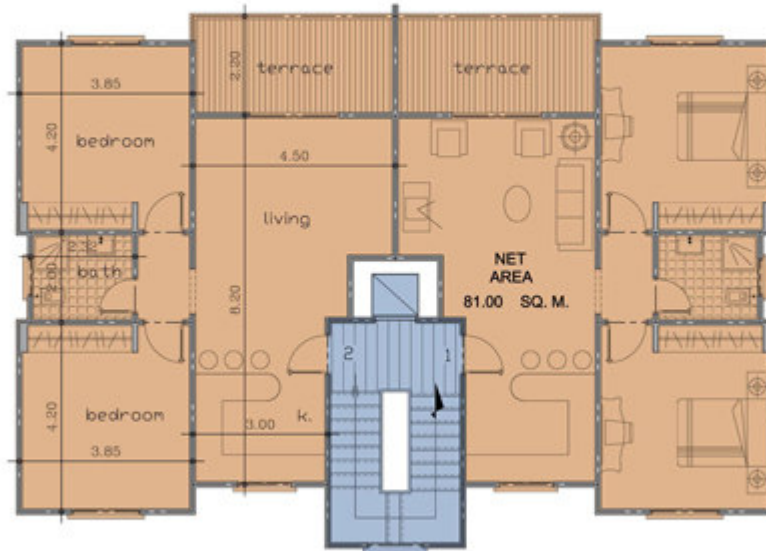
BDG BLOCK TYPE 2



- ORIGINAL BLOCK
- GROUND + 2 FLOORS
- 2 apts of 2BD per floor
- 2BD aprox. area: 81m²
- Apts/Block: 6 of 2BD



MASTERPLAN LOCATION
11 Residential Blocks



TYPICAL FLOOR PLAN

BLOCK AREA = 180 SQ. M.

PEARL OF SAHL HASHEESH - PLOT 22B
Building Type 2 Floor Plan
Oct,2007

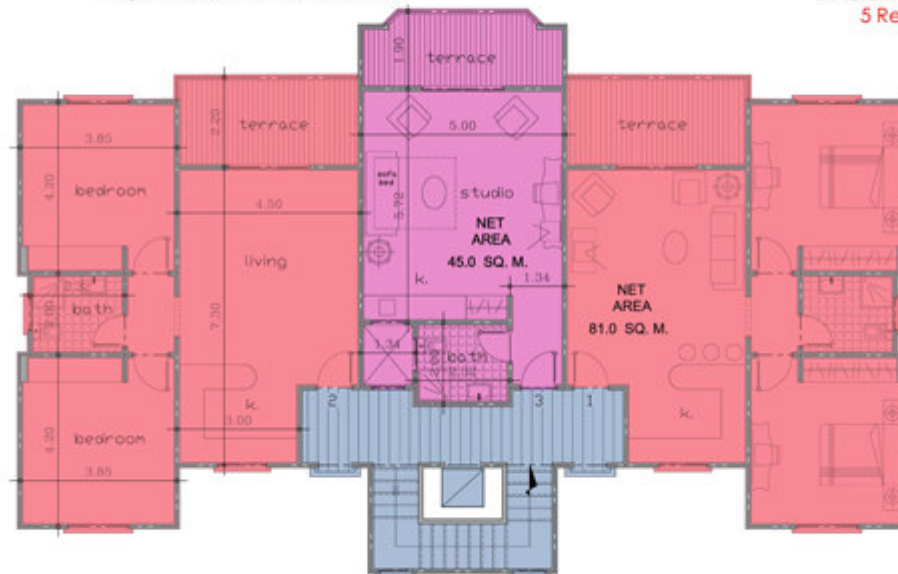
BDG BLOCK TYPE 3



- NEW BLOCK
- GROUND + 2 FLOORS
- 2 apts of 2BD per floor
- 1 apt Studio per floor
- 2BD aprox. area: 81m²
- Studio aprox. area: 45m²
- Apts/Block: 6 of 2BD + 3 Studios



MASTERPLAN LOCATION
5 Residential Blocks



TYPICAL FLOOR PLAN

BLOCK AREA = 236.00 SQ. M.

PEARL OF SAHL HASHEESH - PLOT 22B
Building Type 3 Floor Plan
Oct,2007



BDG BLOCK TYPE 4



- NEW BLOCK
- GROUND + 2 FLOORS
- 2 apts of 3BD per floor
- 3BD aprox. area: 110m2
- Apts/Block: 6 of 3BD



MASTERPLAN LOCATION
3 Residential Blocks

PEARL OF SAHL HASHEESH - PLOT 22B
Building Type 4 Floor Plan
Oct.2007



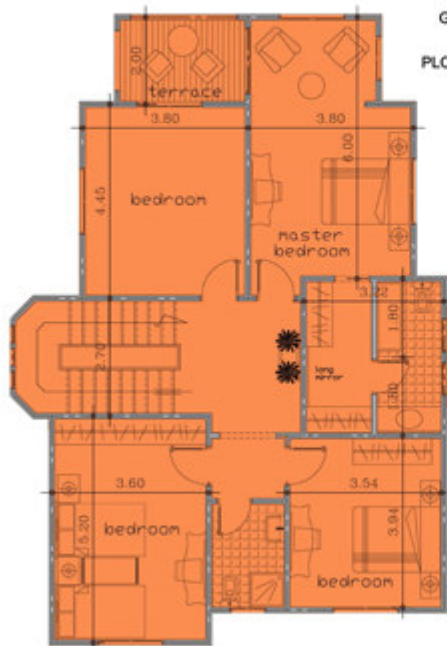
TYPICAL FLOOR PLAN
BLOCK AREA = 238 SQ. M.



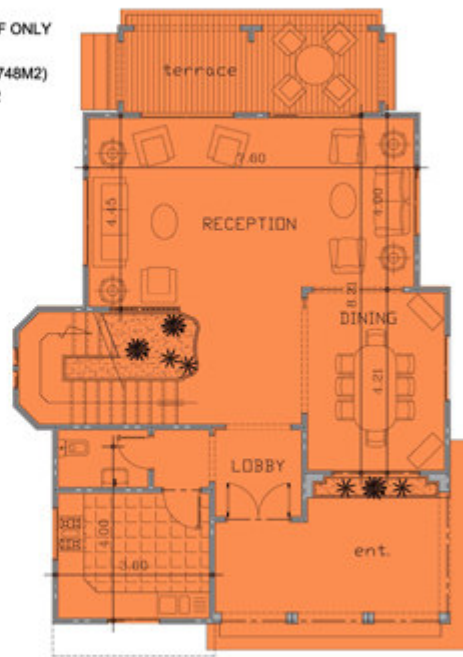
MASTERPLAN LOCATION
12 Villa Plots

PEARL OF SAHL HASHEESH - PLOT 22B
Typical Villa Floor Plans
Oct.2007

GROUND, FIRST & ROOF ONLY
NO BASEMENT
PLOT AREA = VARIES(500-748M2)
POOL AREA = 40M2



FIRST FLOOR PLAN AREA = 122 SQ. M.



GROUND FLOOR PLAN AREA = 98 SQ. M.

VILLA





Mark Foster Leisure Club Floorplan